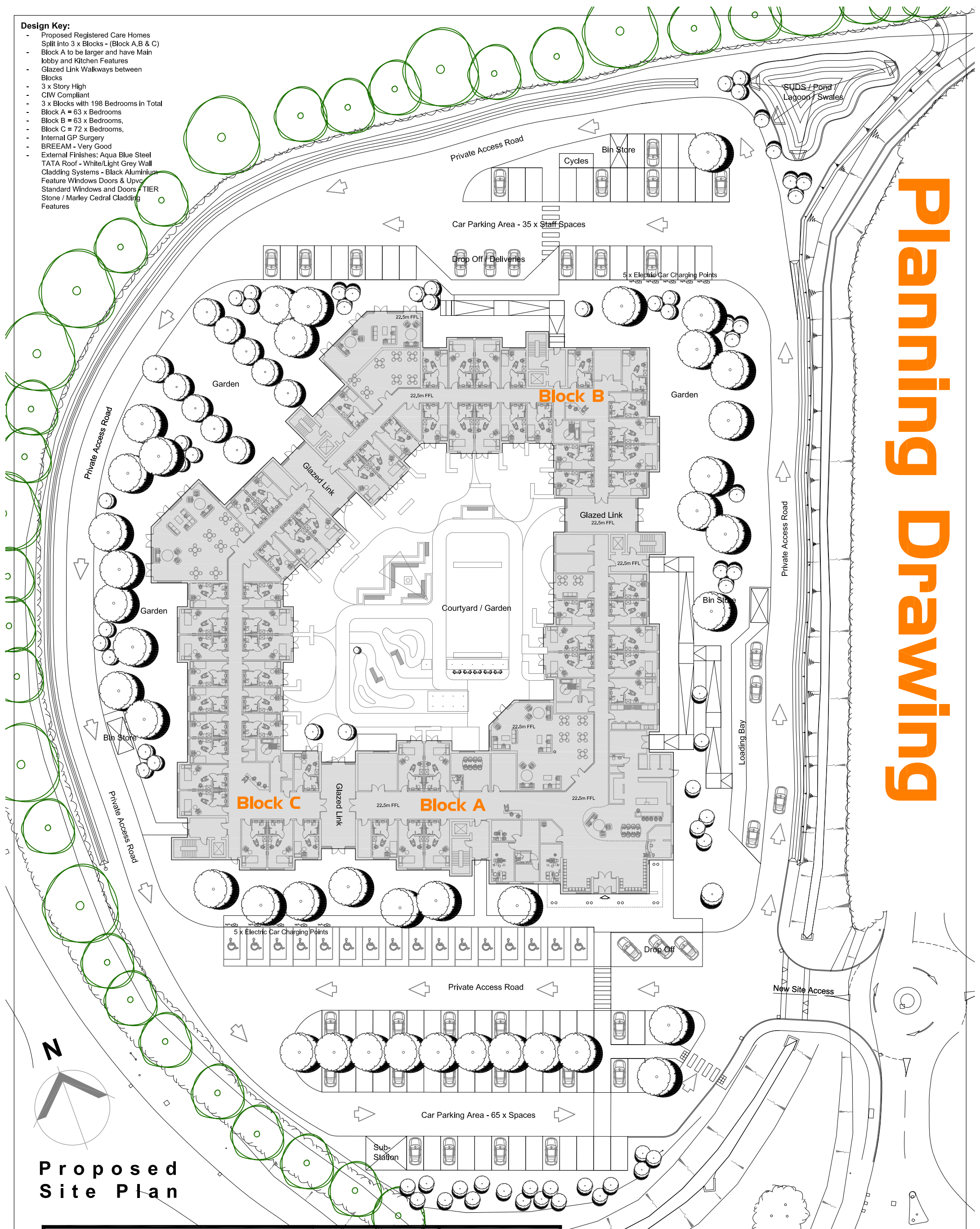


Planning Drawing

- Design Key:**
- Proposed Registered Care Homes Split into 3 x Blocks - (Block A, B & C)
 - Block A to be larger and have Main lobby and Kitchen Features
 - Glazed Link Walkways between Blocks
 - 3 x Story High
 - CIW Compliant
 - 3 x Blocks with 198 Bedrooms in Total
 - Block A = 63 x Bedrooms
 - Block B = 63 x Bedrooms,
 - Block C = 72 x Bedrooms,
 - Internal GP Surgery
 - BREEM - Very Good
 - External Finishes: Aqua Blue Steel TATA Roof - White/Light Grey Wall Cladding Systems - Black Aluminium Feature Windows Doors & Upvc Standard Windows and Doors - TIER Stone / Marley Cedral Cladding Features



Proposed Site Plan

Project:	Proposed Registered Care Home Development		
Drawing:	Proposed Site Plan (Feasibility Drawing)		
Client:	Lucania Associates / Star Units Ltd.		
Location:	Plot C7, St. Asaph Business Park, St. Asaph		
Scale:	1:500	Paper:	A3
Date:	Mar. 2019		
Drawing No.:	BR:STAR:BR:PL02		

BR Architecture
 100A Penrhyn Beach East,
 Penrhyn Bay. LL30 3RW
 t - 07789 175903
 e - info@brarchitecture.com
 w - www.brarchitecture.com

