

Legend	
	Consumer Unit
	Light Switch
	Light Pull Switch
	5' LED Light
	5' LED Vapour Proof Light
	2kW Convector Heater
	2kW Downflow Heater c/w Adjustable Thermostat
	Dbl. Skt. @300mm F.F.L
	Dbl. Skt. @1100mm F.F.L
	2kW, 10ltr. Undersink Water Heater
	12v, 100mm Extraction Fan Timed With Lights c/w Overrun

****PLEASE NOTE****

BOTTOM RAIL SIZE: 100x50x10.42Kg/m P.F.C
 TOP RAIL SIZE: 76x38x6.7Kg/m P.F.C
 BEARER SIZE: 76x38x6.7Kg/m P.F.C

915x915mm 'ALI' FRAMED, DOUBLE GLAZED,
 SLIDING WINDOWS c/w KIRNCROFT SHUTTERS.
 FORK TUNNEL CENTRES @ 1130mm.

Lining Details

WALLS	EGB10 & INSULATED
CEILINGS	MONO WHITE & INSULATED
TRIMS	WHITE PLASTIC
FLOOR	VINYL FLOORING OVER 15mm PLYWOOD

PROFILED		
FLATSIDED		✓
Rev.	A	Date
		00/00/00
Amendment Details		Amended By: XX
Drawn	DR	Date
		07/08/18

Approved By:

Name:

Signature:

Date:

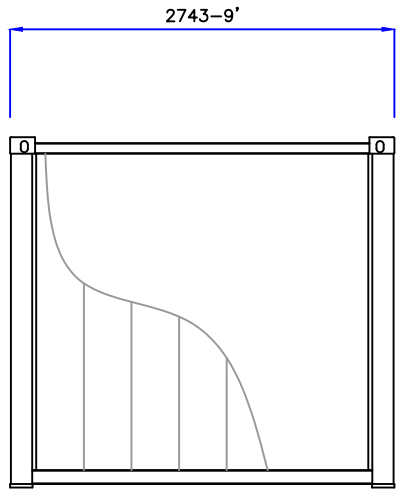
Title:
 Portable Offices
 6062 L x 2743 W x 2502 H (20'x9'x8'H) – Complex



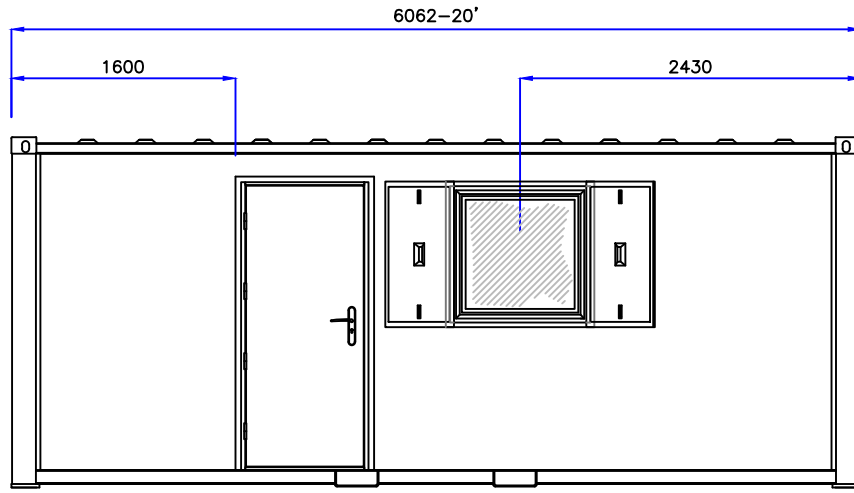
Dwg. No.
 PRT_2009CXN01A
 Tab 1 Of 2 – Plan
 Do Not Scale

FLAT SIDED CONSTRUCTION

View B

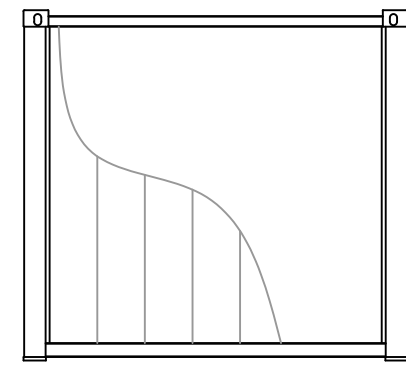


View A

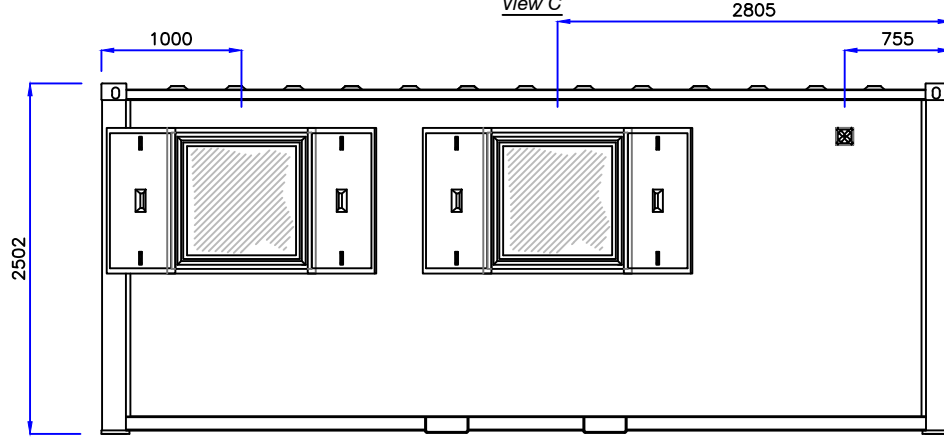


180"
"KIRNCROFT"
PERSONNEL DOOR

View D



View C



1130
Forktunnel Centres

PROFILED			
FLATSIDED		<input checked="" type="checkbox"/>	
Rev.	A	Date	00/00/00 Amended By: XX
Amendment Details			
Drawn	DR	Date	07/08/18

Approved By:
Name:
Signature:
Date:

Title:
Portable Offices
6062 L x 2743 W x 2502 H (20'x9'x8'H) – Complex



Dwg. No.
PRT_2009CXN01A
Tab 2 Of 2 – Elevations
Do Not Scale